

Phonics 3



a_e

a and **e** are cheeky partners. When **a** and **e** work together, they say /ai/.

a and **e** are too cheeky to sit together so they have to have a letter sit between them.

a — **e**

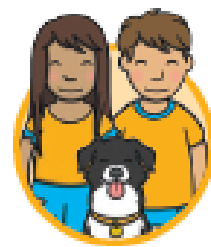
Let's read these words.

ape
ate
make
tape
game

x

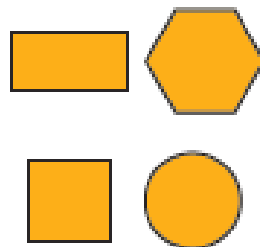
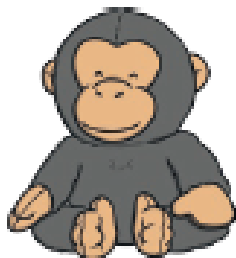
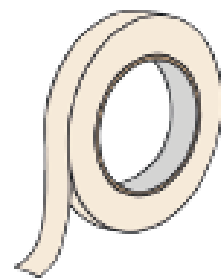
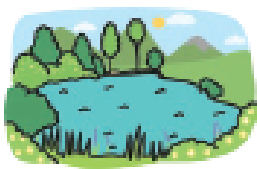
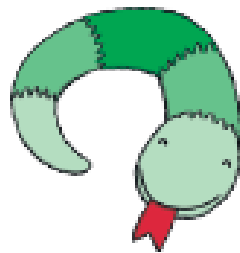


a_e Jigsaw Puzzle



Level 5

Dad and Grandpa Dada are making an **a_e** jigsaw for the children to play! Can you help them? Write the **a_e** word to match the picture.





“I want to make plenty of food for the party,” said Mum.
“Can we help?” shouted Kit. “I can bake the cake! That’s the most important job!” he said, licking his lips again.